

# Improved, high-throughput approach for phosphorus speciation in natural sediments via the SEDEX sequential extraction method

K.C. Ruttenberg,<sup>1,2</sup> N.O. Ogawa,<sup>1,3</sup> F. Tamburini,<sup>1,4</sup> R.A. Briggs,<sup>2</sup> N.D. Colasacco,<sup>1,5</sup> and E. Joyce<sup>1,6</sup>

<sup>1</sup>Department of Marine Chemistry and Geochemistry, Woods Hole Oceanographic Institution, Woods Hole, MA, USA

<sup>2</sup>Department of Oceanography and Department of Geology and Geophysics, SOEST, University of Hawaii at Manoa, Honolulu, HI, USA

<sup>3</sup>Institute for Frontier Research on Earth Evolution (IFREE)/JAMSTEC, Yokosuka, Japan

<sup>4</sup>Institute of Plant Sciences, D-AGRL, ETH Zurich, Lindau, Switzerland

<sup>5</sup>National Oceanic and Atmospheric Administration, Honolulu, HI, USA

<sup>6</sup>Marine Institute, Rinville, Oranmore, County Galway, Ireland

## Appendix 2: Engineering drawings of SPEXman reaction vessels (Figs. A2-1 to A2-5).

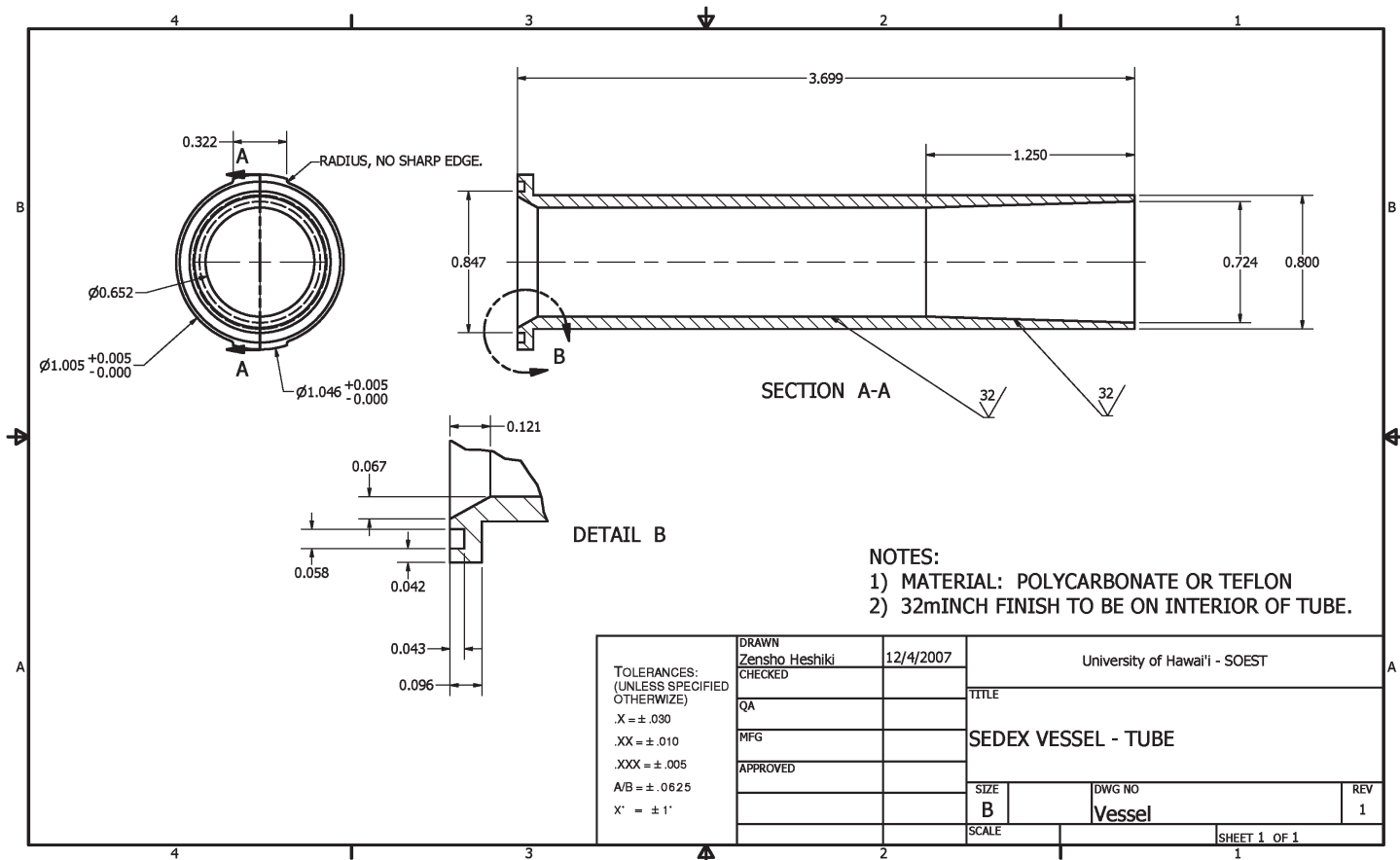


Fig. A2-1. Engineering specifications for SPEXman reaction vessel (Table 11).

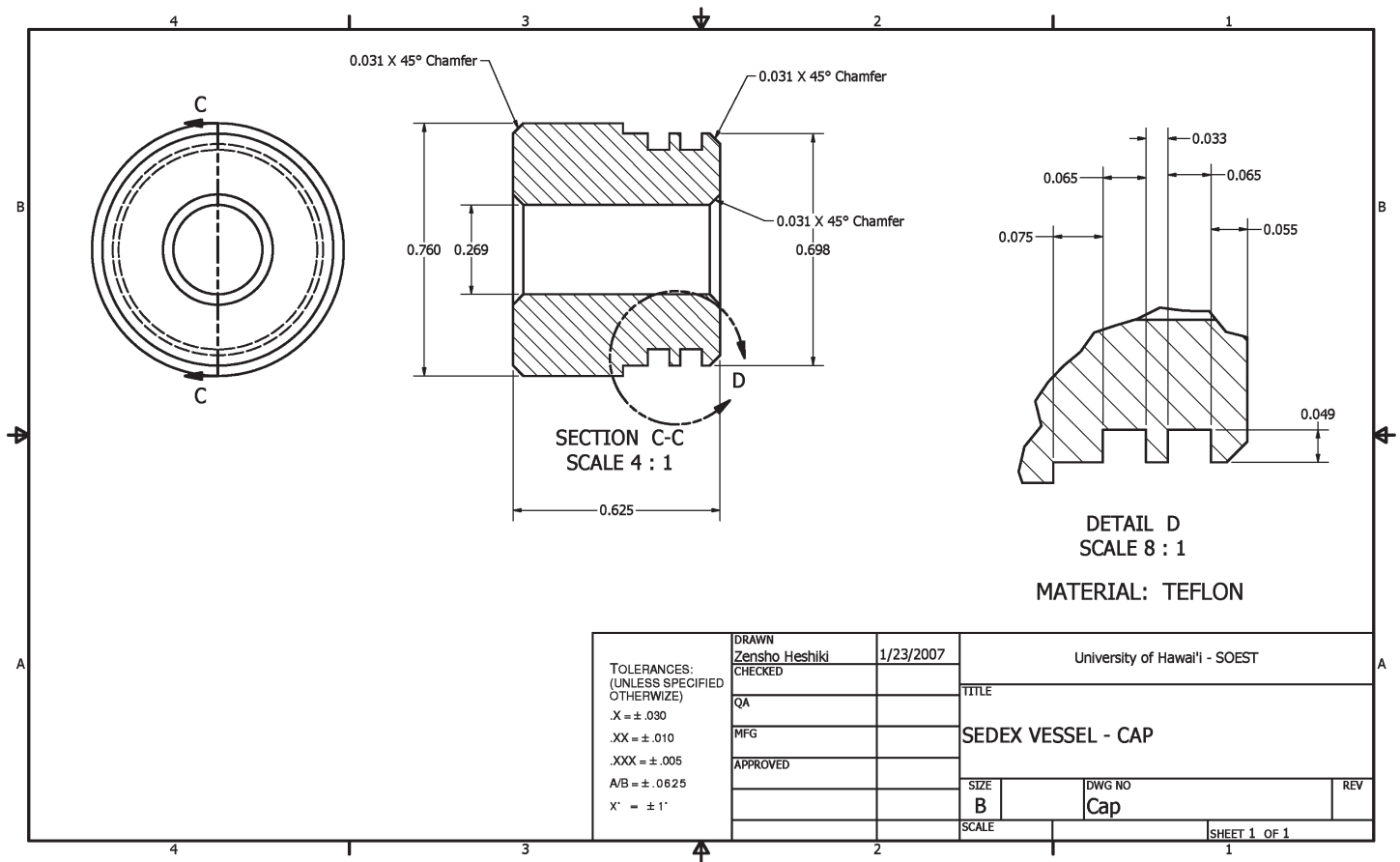


Fig. A2-2. Engineering specifications for SPEXMan friction closure stopper (Table 1E and F).



Fig. A2-3. Three-dimensional rendering of SPEXMan reaction vessel showing flanged, notched base of reaction vessel that sits on filter holder.



**Fig. A2-4.** Three-dimensional rendering of SPEXMan reaction vessel with friction stopper designed to accommodate a check valve (Table 1F and G).



**Fig. A2-5.** Three-dimensional rendering of friction stopper designed to accommodate a check valve (Table 1F and G).